



**BREATHE EASY... Solutions for Clean Safe Air**

# EXTREME AIR DOWNDRAFT TABLE XA38MAX

## Specifications and Technical Data

### TYPICAL APPLICATIONS

- Grinding Dust
- Sanding / Polishing Dust
- Welding Smoke & Fumes
- Mixing and / or Filling Operations
- Deburring
- Soldering

### STANDARD FEATURES:

- 250 FPM Velocities—6,000 CFM
- Baffle Spark Arrestance
- Fire Retardant Cartridge Filter
- Roto-Pulse® Filter Cleaning System
- Easy Access Front Overhang
- Hinged Filter Door with Easy Open Latches for Quick Filter Change-Out
- Factory Pre-Wired Electrics
- Easy Open, High Capacity Dust Tray
- Perforated Metal Work Surface
- 0-5" MiniHelic Filter Gauge

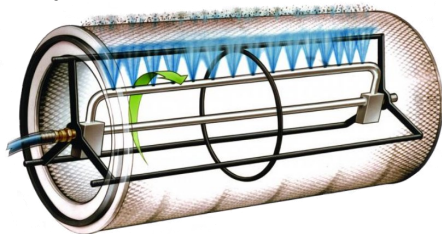
### OPTIONS:

- Back and Side Shields w/Hinged Wing Walls
- Soft-Touch Mat on Perforated Metal Work Surface
- Industrial Casters / Levelling Legs
- Multiple Application Specific Media Options
- Dust Proof 48" LED Light Fixture
- Manual Pulse or Auto-Pulse Cartridge Cleaning System



### HOW IT WORKS:

**Roto-Pulse®** Cartridge cleaning system provides for 30-40% better cleaning of the cartridges.

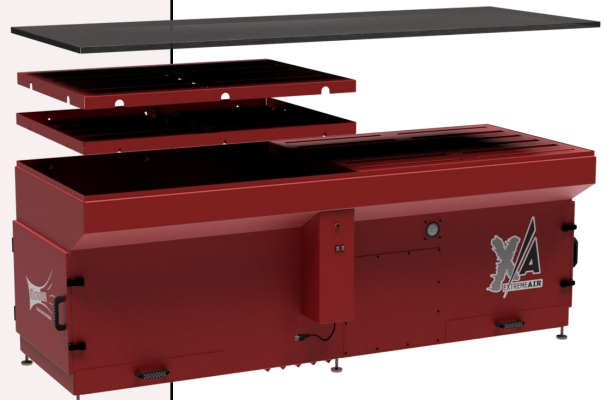


Air is pulsed into a specially designed

aluminum rotating tube equipped with pre-drilled holes. As the air enters this tube, the force of the pulse causes the tube to rotate. As the tube spins, air exits the pre-drilled holes resulting in air hitting the entire inside length of the cartridge, pulsing dirt particles away from the filter for a much more efficient cleaning cycle and increased filter life.

### ENGINEERED SAFETY

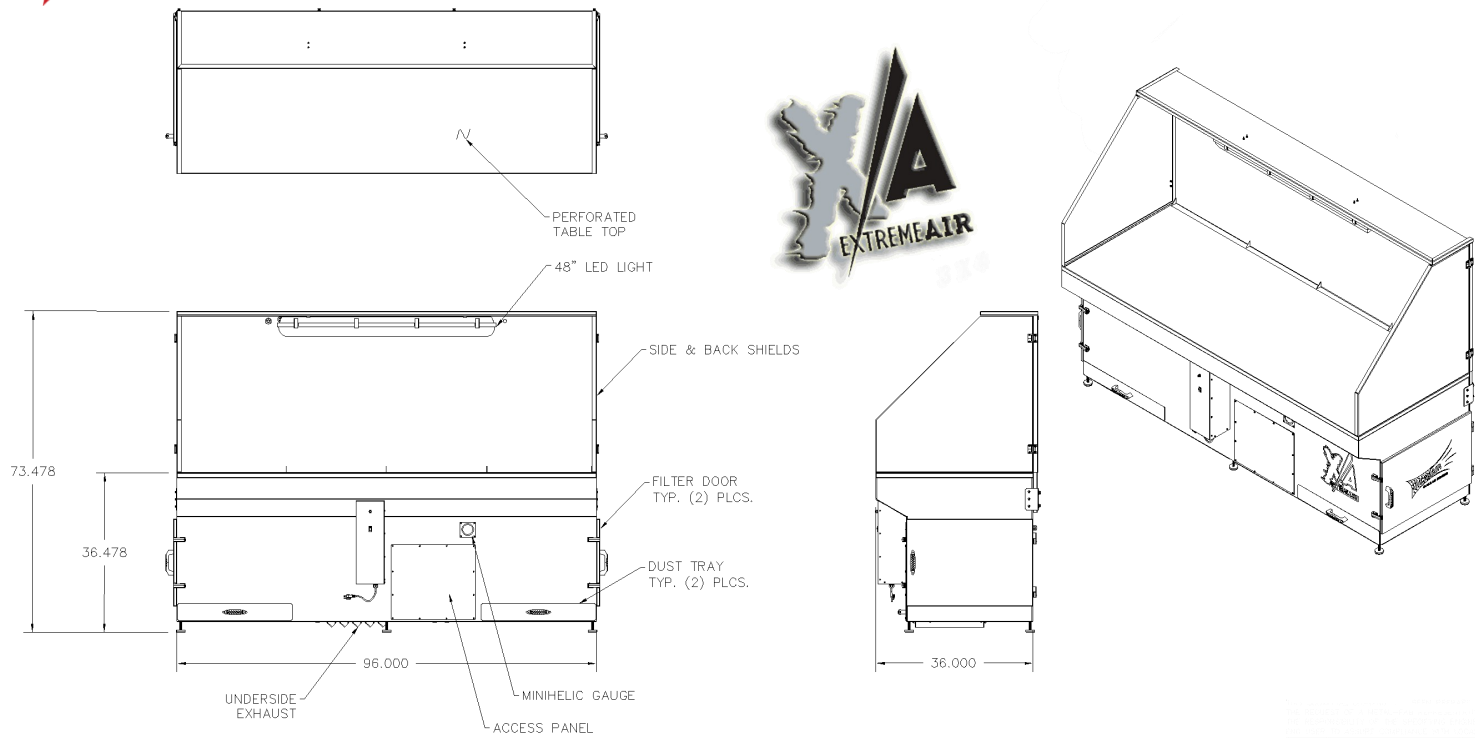
Built-In Baffle Spark Arrestance provides ultimate protection from sparks reaching the filter media, offers ease of maintenance and provides for increased load capacity.



L2980-03/2018



# XA38M Downdraft Table



## XA38M SPECIFICATIONS:

### OVERALL DIMENSIONS:

37" D X 101"W X 36" H—NO BACKSHIELD  
37" D X 101" W X 73" H—WITH BACKSHIELD

### TABLE TOP DIMENSIONS:

36" D X 96" W

### WEIGHT:

1,400 LBS, ACTUAL, VARIES DEPENDING ON  
OPTIONS SELECTED

### CABINET:

14 GA. WELDED GALVANEAL STEEL W/EXTERIOR  
SURFACES GROUND SMOOTH

### FINISH:

INDUSTRIAL GRADE TEXTURED BAKED  
CRIMSON RED ENAMEL PAINT—INSIDE AND OUT

### FILTRATION:

FOUR EA. FIRE-RETARDANT CARTRIDGE,  
400-600 SF MEDIA—DEPENDENT ON MEDIA  
SELECTED—MERV 11—16 AVAILABLE

### ROTO-PULSE® CLEANING SYSTEM:

REVOLUTIONARY CLEANING SYSTEM, THAT  
CLEANS THE ENTIRE SURFACE OF CARTRIDGE,  
FOR CLEANER FILTERS & EXTENDED FILTER  
LIFE

### FILTER ACCESS:

SIDE LOAD THROUGH HINGED DOOR FOR  
EASE OF ACCESS

### EXHAUST:

STRAIGHT THROUGH

### MOTOR:

5 HP, 230 / 460V, 3 PHASE, TEFC

### MAX CURRENT:

12.6 / 6.3 AMPS

### BLOWER:

BELT DRIVEN, FORWARD INCLINED BLOWER

### AIR FLOW:

250 FPM ACROSS TABLE-TOP— 6,000 CFM

### FILTER CHANGE INDICATOR:

0-5" MINIHHELIC GAUGE

### ELECTRICAL:

230 /460V, 3 PHASE— INCLUDES  
FACTORY WIRED ON/OFF SWITCH, LIGHT  
SWITCH, & PULSE PUSH BUTTON

### LOAD CAPACITY:

1,800 LBS

### NOISE LEVEL:

80 dBA AT OPERATOR

### CONTROLS:

ON/OFF SWITCH WITH STARTER AND  
OVERLOAD RELAY